



Our project workshop is protected from the weather and given its first insulation layer

It seems extraordinary but the huge 44mm thick walls of our project Nick cabin were assembled with only one screw (to locate the door edge). However, the boxes of galvanised

### Tools needed for building the workshop

- 1kg Rubber Mallet
- Claw Hammer
- Small Plane
- Chisel
- Saw
- Allen Key set (for grub screws on door fittings)
- Screw Drivers (Phillips & flat)
- Spirit Level
- Power Tools are not needed but an electric jig Saw and driver may be useful
- Stanley knife with hooked blade
- Three Ladders - minimum 10ft reach
- One or two friends to help with assembly

hardware come into play with the fixing of the roof. The kit is supplied with grooved T&G softwood boards and packs of heavy duty felt shingles (available in colours to match your paint choice). However, as this is a workshop that will be used all year around, we decided to add Kingspan insulation boards between the boards and the shingles. These are highly energy efficient and are used in new domestic buildings - available from builder's merchants.

### Step-by-step

**1** Once the roof beams are on it may be necessary to plane off part of the tongue on the top wall sections, front and back, so that they are flush with the sloping roof apex supports side and middle. A hand plane is fine for this as you only need to remove a couple of millimetres.

**2** Rip off the tongue of the first board so that there is a flush edge on the end of the roof pitch. Check the boards are fitted with the chamfered face down.



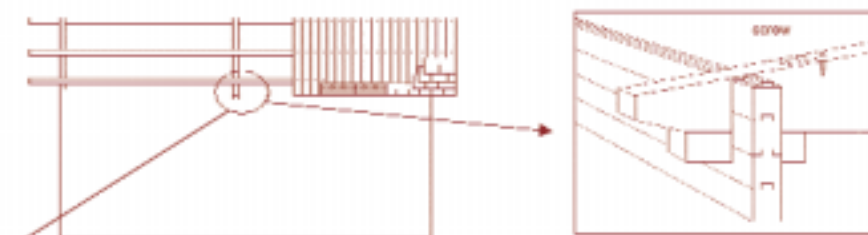
**3** When fitting the tongue & groove roof boards start at one end and fit the first board flush with the main roof beams.

### Useful information

Our Lugarde log cabin and all buildings shown here supplied by **Garden Affairs Ltd**  
 ☎ 01225 470372,  
 fax: 01225 442855  
 www.gardenaffairs.co.uk

Fixings and adhesive supplied by **Screwfix Direct**  
 ☎ 0500 414141  
 www.screwfix.com

## WORKSHOP



Detail of roof support

Middle roof support

On the larger 4m x 5m workshop the middle section of the roof is supported by additional cross timbers. Two small wooden support noggins are fitted first into the pre-notched wall sections of the front and rear top two wall sections then the supporting timbers can be added as per the two side walls.

To stop the cross timbers from moving when locating the main roof beams we recommend inserting a screw vertically into the ends of the cross timbers.

Front face timbers



**4** Work across the roof adding the tongue and groove boards, don't push the boards too tightly together and try to keep them parallel to the sides of the building.

**5** Nail the boards into the building edge and into the roof ridge beam.

**6** Galvanised fixings are supplied for the Nick cabin.

**7** Once the boards are complete, snap a chalk line along the eaves and trim the board ends flush. We used a cordless trimmer.



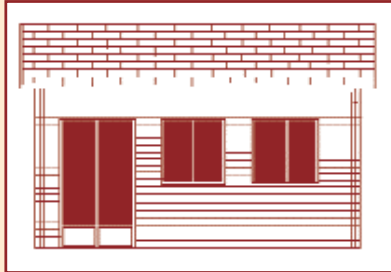
### Top tips for a successful build:

- Make sure your base is well prepared and level
- Keep everything covered until you need it - and stack it in order of use.
- If possible pre-treat the timber paying particular attention to the end timbers with a good wood preserver prior to assembly or during installation.
- When fitting the pre-cut apex roof timbers, screw them down vertically at each end. This makes installing the main roof beams far easier and stops the apex sections moving.

**8** For the roof we chose Kingspan TR31 as the insulation. This is a high-density foil backed foam insulation board with a 6mm WBP ply bonded to one face. This insulation can be fixed

directly to the outside of the roof, onto the tongue and groove boards, and then the shingles fixed to the ply. When fixing the boards, use a suitable building adhesive.

## WW EXCLUSIVE DISCOUNT OFFER!



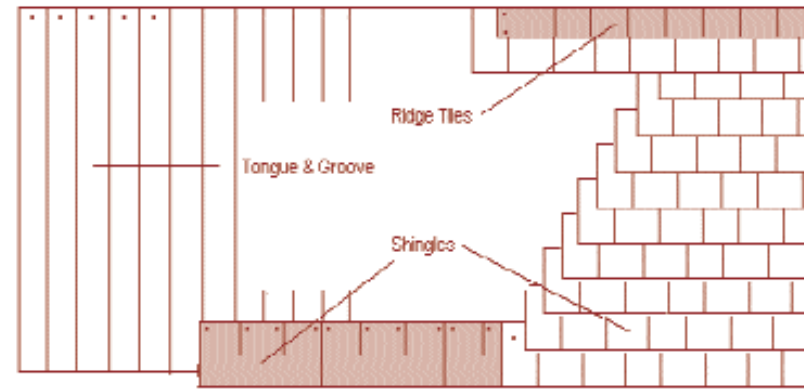
We have got together with Garden Affairs, the suppliers of our log cabin, to offer WW readers the chance to buy their own workshop at a discount price. These buildings come in three sizes and are all made from 44mm planed softwood with 19mm T&G roofs and floors, double glazed doors and windows, felt shingle packs and all fixings. Delivery is direct to your door.

Option 1	4x5m cabin	£4,200
Option 2	4x4 cabin	£3450
Option 3	4x3 cabin	£3150

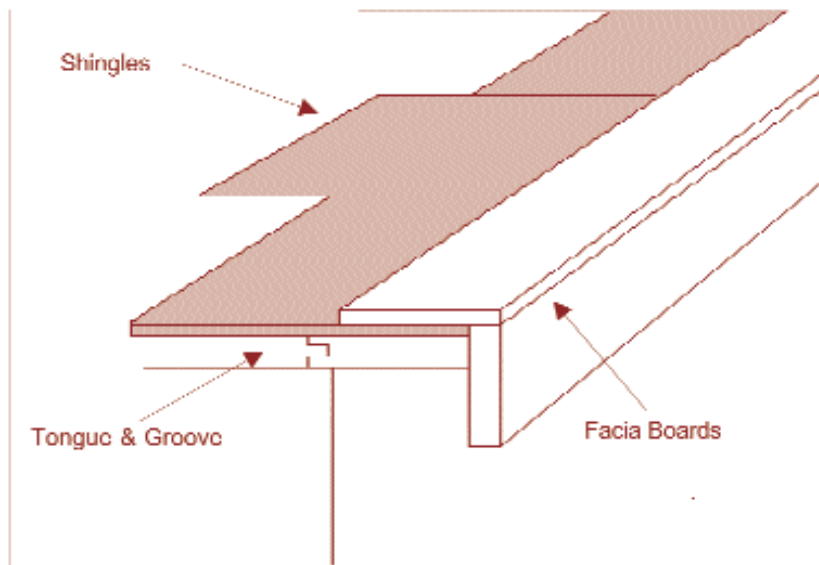
Please contact Garden Affairs direct for more information:  
 ☎ 01225 470372,  
 fax: 01225 442855,  
[www.gardenaffairs.co.uk](http://www.gardenaffairs.co.uk)

## TIP

Keep the off-cuts of shingle to use under the floor joists to level out any minor dips etc in the base.



Roof assembly – tongue & groove, shingles and ridge tiles.



Front and top fascia boards

**9** For added strength, screwing through the insulation into the tongue and groove boards below. We used Screwfix gold screws and adhesive.

**10** Fix the shingles using the nails provided. Start at the bottom and work your way up but leave a 25mm to 30mm shingle overhang at the bottom.

**11** Build up each layer staggering the shingles and nail at each end and approximately 50mm above each

## NEXT MONTH

We tackle the tongue and groove flooring and show how to add underfloor Kingspan insulation to keep your cabin warm all year round.

slot in the shingles. Off-cuts can be used at either end. Once both sides are complete the apex is covered using single shingles laid at right angles to the main roof shingles to create a water tight finish.

