



Part 5: The floor

1st class cabin

Our workshop is weatherproof but now it's time to add the flooring, including between-the-joist insulation

With the windows, doors and roof on our project workshop, it's time to tackle the floor. The cabin is supplied with a 19mm softwood tongue and groove floor but for a solid workshop floor, we decided to add a sub-floor of 12mm OS Board.

Step-by-step

1 The joists are laid lengthways across our 5x4m floor area, at around 570mm centres. Measure and mark the spacing on each side of the cabin.

2 The treated softwood joists are held in place with lightweight universal hangers, available from Screwfix. We used these because our cabin is on a slope and the floor is floating. On a level surface, you could simply screw the joists to the outer frame and the floor itself will stiffen the whole structure.

3 To support the floor joists across the floor span, we used quartered concrete slabs to form small pillars at 750mm centres. Use a builders' hammer to break the slabs. First make light chips across the surface in a line.

4 The slab will eventually break across the chip line. Repeat to form neat quarters. We used around twenty of the budget Wickes slabs, at around 40p per slab.

5 To reduce the chances of water bridging the concrete/timber joint, fit a piece of wide flashbanding or building DPC between the bottom of the joist and the top of the concrete. Double check the joists are still horizontal with a spirit level and adjust if necessary.

6 Work across the whole floor, adding the brick/paving pillars and DPC until all the joists are in place and horizontal.

Useful information

Our Lugarde log cabin and all buildings shown here supplied by **Garden Affairs Ltd**
 ☎ 01225 470372,
 fax: 01225 442855
 www.gardenaffairs.co.uk

Fixings and adhesive supplied by **Screwfix Direct**
 ☎ 0500 414141
 www.screwfix.com

7 Just as the roof of the workshop has additional Kingspan rigid foam insulation, it's important to insulate the floor. To keep the material in place, hammer in scewed nails along the inner edges of the joists.

8 Cut the 4x8ft 65mm thick panels to fit between the joists. A handsaw or craft knife is ideal for this. Wedge the pieces into place, making sure the top surface is just below the top of the joist.

9 The subfloor of flakeboard can now be fitted. Mark the boards so that any cuts are over the centres of joists and trim to size with a circular saw. Leave at least a 10mm gap all around the perimeter to allow for expansion.

10 Nail or screw the flakeboard panels to the joists, around the edge and at 300mm centres along the remaining joist lines.



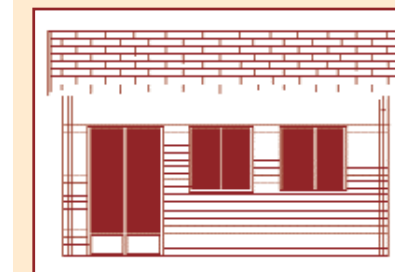
11 As you cover the area, mark in the joist centre lines on the flakeboard. This will ensure your nails go into the centre of the joists. A spirit level is a handy straight edge.

12 20mm all the way around the edge to allow for natural movement. Do not fit the strips too tightly together as the floor may buckle slightly as it moves with the varying moisture levels / seasons. Fit the skirting board.

WORKSHOP



WW EXCLUSIVE DISCOUNT OFFER!



We have got together with Garden Affairs, the suppliers of our log cabin, to offer WW readers the chance to buy their own workshop at a discount price. These buildings come in three sizes and are all made from 44mm planed softwood with 19mm T&G roofs and floors, double glazed doors and windows, felt shingle packs and all fixings. Delivery is direct to your door.

Option 1	4x5m cabin	£4200
Option 2	4x4 cabin	£3450
Option 3	4x3 cabin	£3150

Please contact Garden Affairs direct for more information:
 ☎ 01225 470372,
 fax: 01225 442855,
 www.gardenaffairs.co.uk

